

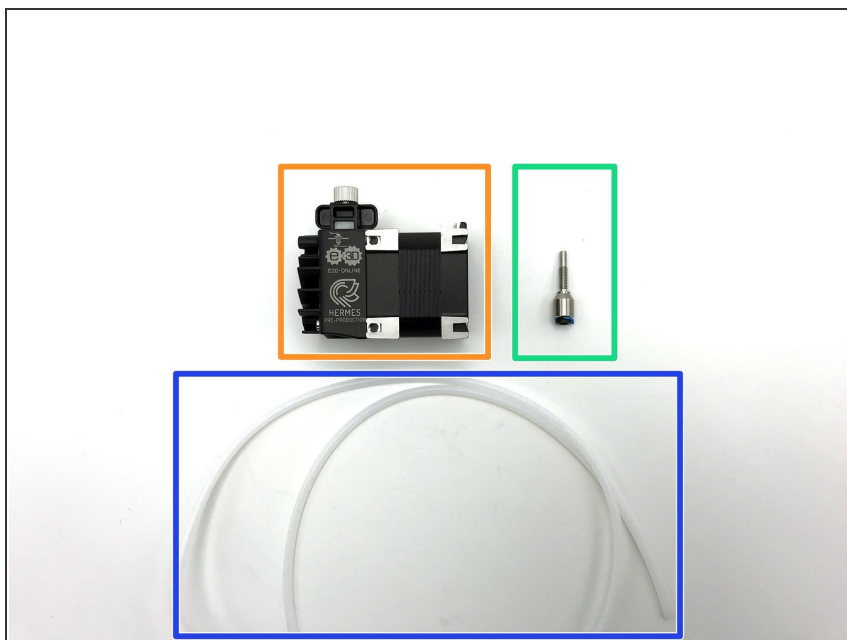


03 - E3D Hemera Bowden Assembly

Written By: Dan Rock

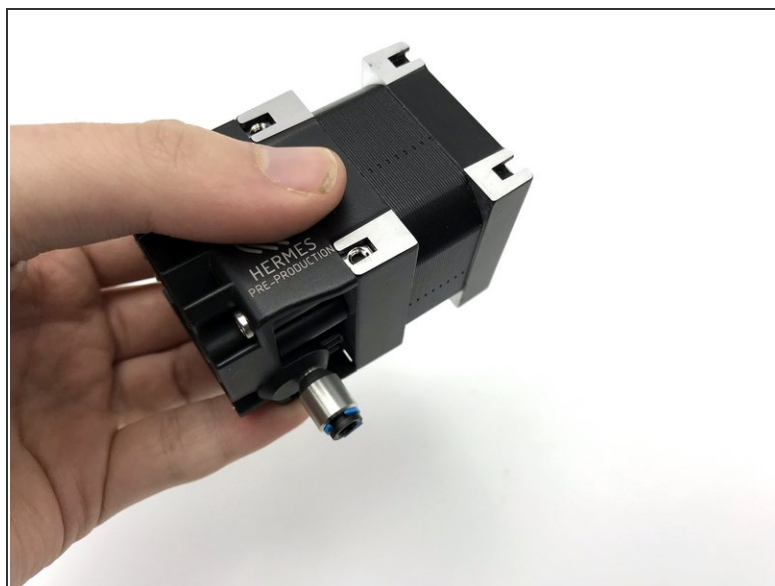


Step 1 — Gather parts



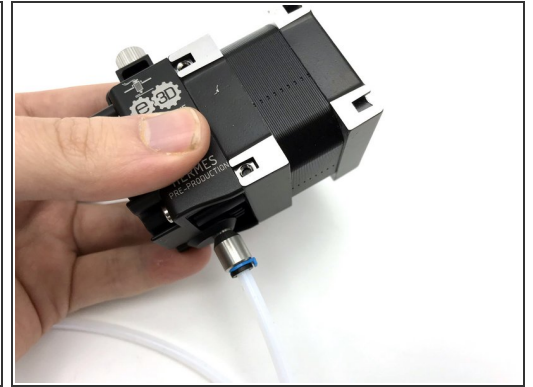
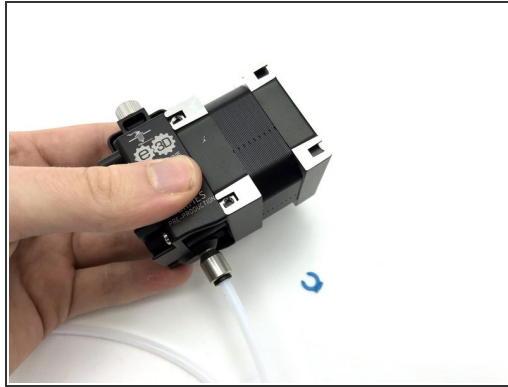
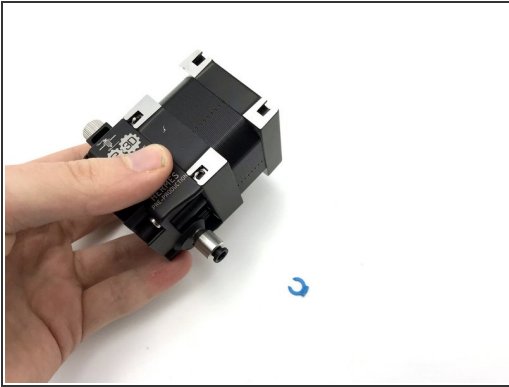
- Gather:
 - x1 Hemera assembly
 - x1 Hemera bowdaptor
 - x1 PTFE tube

Step 2 — Screw in the Bowdaptor



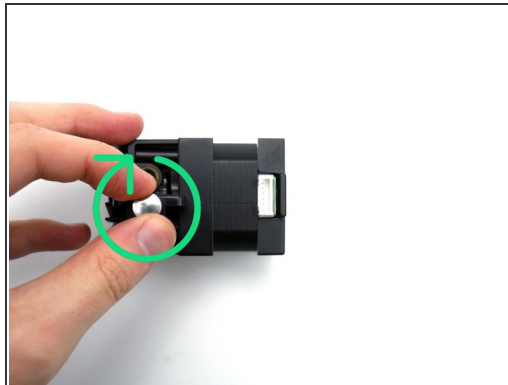
- Screw in the Hemera Bowdaptor

Step 3 — Insert the PTFE



- Remove the Bowden clip
 - Insert PTFE tube
 - Insert collet clip
- i** Ensure the PTFE is pushed as far as it will go

Step 4



- To adjust the idler tension, rotate the thumbscrew at the top.
- Rotating clockwise (with the heat sink engraving facing you) increases filament tension.
- Rotating anticlockwise decreases filament tension.

Step 5



- ① Recommended starting idler lever tension.
 - The white spring block should be flush with the front face of the idler lever.
- ① Further adjustment may be required dependant on material being used, for example flexible filaments may require additional tension.